

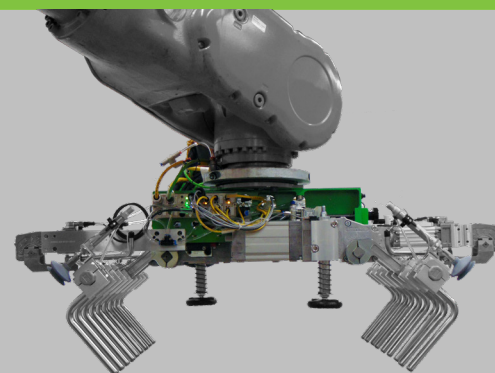
Applied Robotics™ Palletizing Gripper

ARPG - Bag Gripper

Applied Robotics Palletizing Gripper (ARPG) – Bag Gripper provides rapid pick-and-place palletizing of bagged products, offering complete robotic control of a palletizing cell.

Advantages:

- High Energy Density (Payload to Gripper Weight Ratio)
 - Doesn't require large robots to palletize lightweight bags.
- Versatility
 - Gripping width easily adjusts and locks with our patented Self-Locking Rotary Handwheel to reduce changeover time.
- Failsafe Bag Support
 - Will not lose payload during loss of power or air.
- Robustness
 - Engineered construction with select materials provides maximum strength in any industrial environment.
- Bag Present Sensor
 - Provides assurance that the bag is within the grasp of the gripper.



SPECIFICATIONS

Model	Rated Payload	Recommended Maximum Bag Length		Bag Width	Bag Height	Gripper Weight
	kg (lb)	mm (in)		mm (in)	mm (in)	kg (lb)
ARPG15	15 (33)	600 (23.62)		200 - 375 (7.87 - 14.76)	75 - 150 (2.95 - 5.91)	20 (44.1)
ARPG30	30 (66)	750 (29.53)		300 - 500 (11.81 - 19.69)	75 - 150 (2.95 - 5.91)	26 (57.3)
ARPG30-L	30 (66)	1,050 (41.34)		300 - 500 (11.81 - 19.69)	75 - 150 (2.95 - 5.91)	29 (63.9)
ARPG50	50 (110)	900 (35.43)		400 - 600 (15.75 - 23.62)	100 - 200 (3.94 - 7.87)	44 (97.0)
ARPG50-L	50 (110)	1,050 (41.34)		400 - 600 (15.75 - 23.62)	100 - 200 (3.94 - 7.87)	46 (101.4)

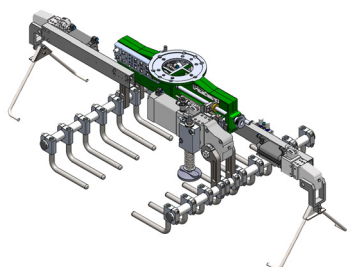
Bags Per Minute: **30 BPM**

Noise Emissions (Sound Pressure): **≤ 70 dB(A) in any direction**

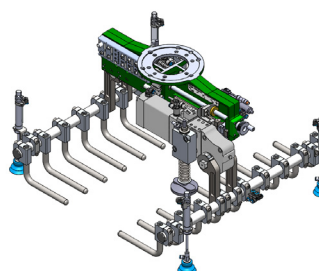
Operating Temperature: **5 – 60 °C (41 – 140 °F)**

Operating Pressure: **4 – 6 bar (58 – 87 psi)**

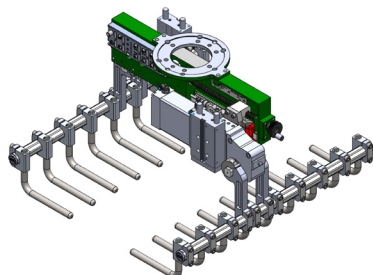
OPTIONS



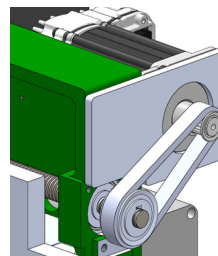
Pallet Picker
Enables picking and placing of standard empty pallets without interrupting palletizing cycle.



Sheet Picker
Allows picking and placing of any type of sheet via suction cups.

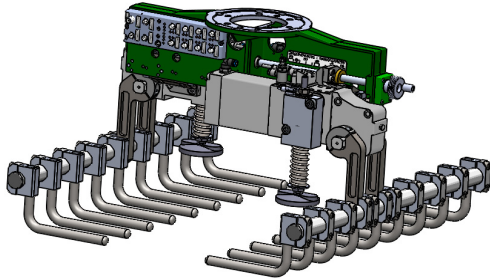


Pneumatic Pusher
Offers controlled clamping and releasing through the use of pneumatic cylinders, as well as giving the same amount of force on all bags, regardless of bag thickness.



Servo Bag Width Adjustment
Provides on-the-fly bag width adjustment so that multiple bag widths can be palletized without the need for operator intervention.

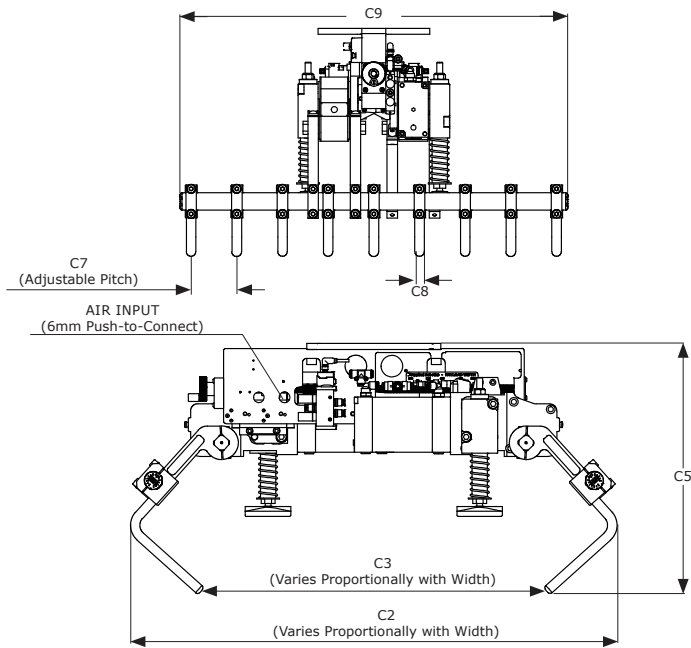
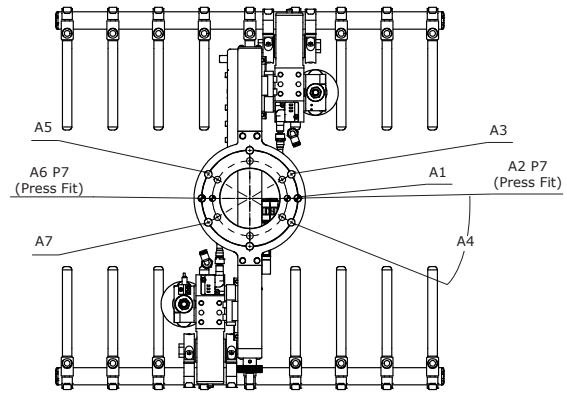
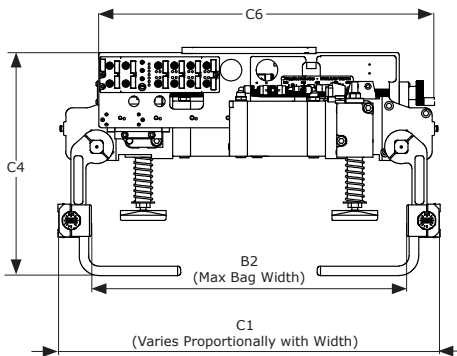
PRODUCT INFORMATION



COMMUNICATIONS
(4-Pin D-Coded M12 Ethernet/IP)
(4-Pin D-Coded M12 Profinet)

POWER
(5-Pin L-Coded M12 Ethernet/IP)
(5-Pin L-Coded M12 Profinet)

B1
(Min Bag Width)



Model	Mounting Information							Opening Range (Bag Width, BW)		Informational Dimensions								
	A1	A2	A3	A4	A5	A6	A7	B1	B2	C1	C2	C3	C4	C5	C6	C7	C8	C9
ARPG15	160 (6.30)	12 (0.47)	12.5 (0.49)	30°	125 (4.92)	10 (0.39)	10.5 (0.41)	200 (7.9)	375 (14.8)	BW+106 (BW+4.2)	BW+311.8 (BW+12.3)	BW+151.7 (BW+6.0)	384 (15.1)	409 (16.1)	563 (22.1)	16 - 200 (0.6 - 7.8)	15.88 (0.625)	494.8 (19.5)
ARPG30	160 (6.30)	12 (0.47)	12.5 (0.49)	30°	125 (4.92)	10 (0.39)	10.5 (0.41)	300 (11.8)	500 (19.7)	BW+106 (BW+4.2)	BW+284.9 (BW+11.2)	BW+50.5 (BW+2.0)	381 (15.0)	417 (16.4)	563 (22.1)	16 - 200 (0.6 - 7.8)	15.88 (0.625)	646.8 (25.5)
ARPG30-L	160 (6.30)	12 (0.49)	12.5 (0.49)	30°	125 (4.92)	10 (0.39)	10.5 (0.41)	300 (11.8)	500 (19.7)	BW+106 (BW+4.2)	BW+284.9 (BW+11.2)	BW+50.5 (BW+2.0)	381 (15.0)	417 (16.4)	563 (22.1)	16 - 200 (0.6 - 7.8)	15.88 (0.625)	1007.4 (39.7)
ARPG50	160 (6.30)	12 (0.47)	12.5 (0.49)	30°	125 (4.92)	10 (0.39)	10.5 (0.41)	400 (15.7)	600 (23.6)	BW+106 (BW+4.2)	BW+352.5 (BW+13.9)	BW+43.8 (BW+1.7)	471 (18.5)	524 (20.6)	636 (25.0)	16 - 200 (0.6 - 7.8)	15.88 (0.625)	806.8 (31.8)
ARPG50-L	160 (6.30)	12 (0.47)	12.5 (0.49)	30°	125 (4.92)	10 (0.39)	10.5 (0.41)	400 (15.7)	600 (23.6)	BW+106 (BW+4.2)	BW+352.5 (BW+13.9)	BW+43.8 (BW+1.7)	471 (18.5)	524 (20.6)	636 (25.0)	16 - 200 (0.6 - 7.8)	15.88 (0.625)	1007.4 (39.7)

* Dimensions are in millimeters (inches).

** All dimensions are descriptive and subject to variation for technical upgrading. We reserve the right to make variations without prior notification.



Applied Robotics, Inc.

648 Saratoga Road, Glenville, NY 12302 USA

Tel: +1 518 384 1000

www.appliedrobotics.com

info@appliedrobotics.com



07.2021_Rev.06_US