

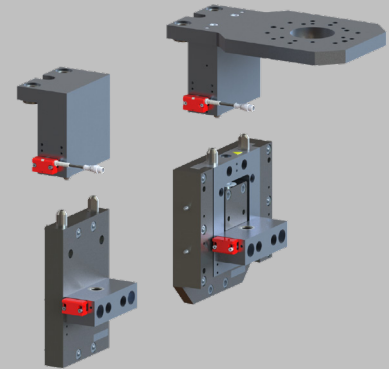
XCHANGE™ Tool Stand Accessory

Heavy Duty Tool Mount Assemblies

Heavy Duty Tool Mount Assemblies (TMA) allow for the docking/undocking of tools during an automatic tool changing operation.

Advantages:

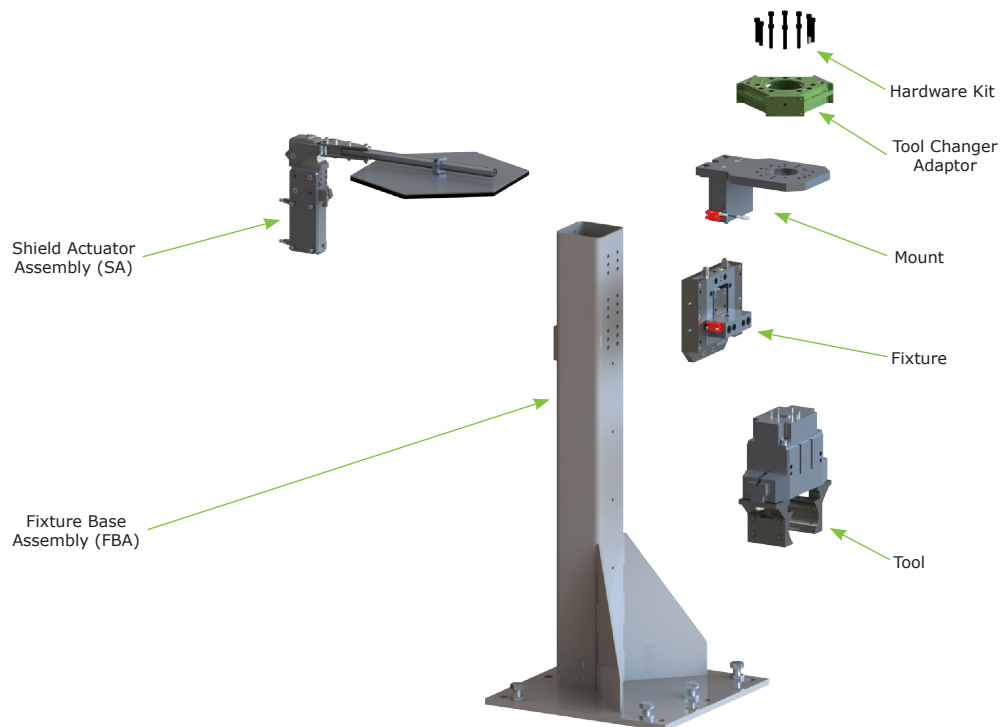
- Accurate docking/undocking location
- Compatible with Fixture Base Assembly (FBA)
- Includes a Non-Contact Tool Stand Switch
 - Detects when a tool is docked in the mount
- Compliant and Non-Compliant versions available
- L-Plate and T-Plate versions available



SPECIFICATIONS

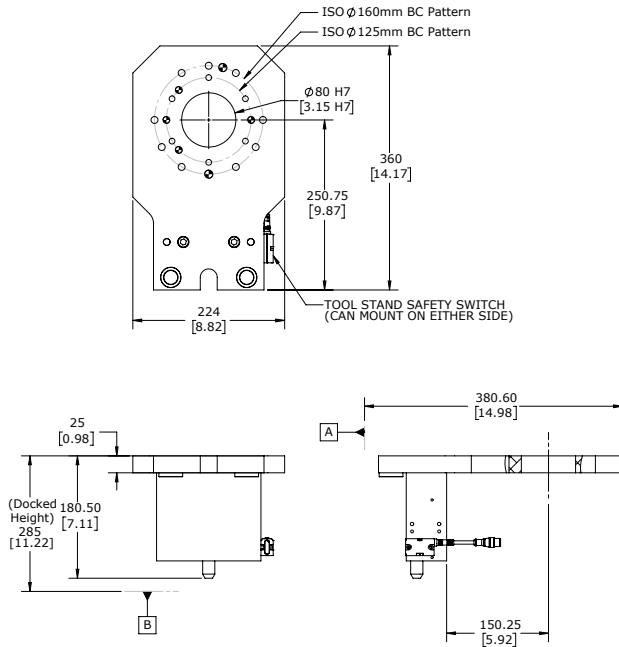
Model	Mounting Type	Fixture Type	T-Plate Weight	Mount Weight	Max Payload
			kg (lb)	kg (lb)	kg (lb)
TM059	L-Plate	Compliant	4.42 (9.74)	9.94 (21.91)	350 (772)
TM055	L-Plate	Non-Compliant	4.42 (9.74)	5.91 (13.03)	350 (772)
TM057	T-Plate with ISO 125mm and 160mm BC Pattern	Compliant	7.83 (17.26)	9.94 (21.91)	350 (772)
TM060	T-Plate with ISO 125mm and 160mm BC Pattern	Non-Compliant	7.83 (17.26)	5.91 (13.03)	350 (772)

STANDARD CONFIGURATION

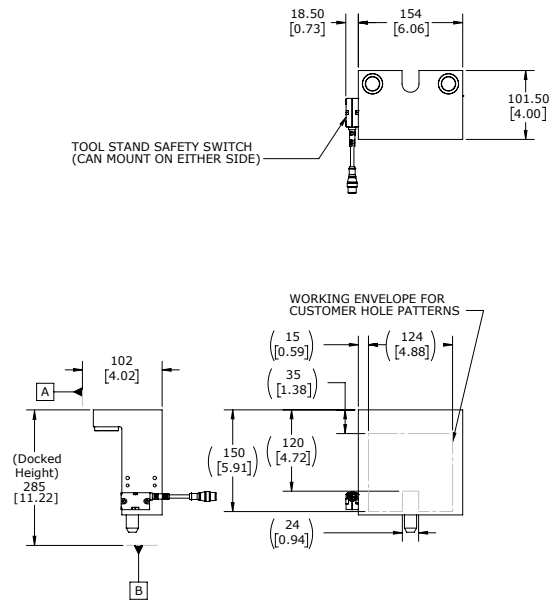


PRODUCT INFORMATION - MOUNTS

T-Plate Mount

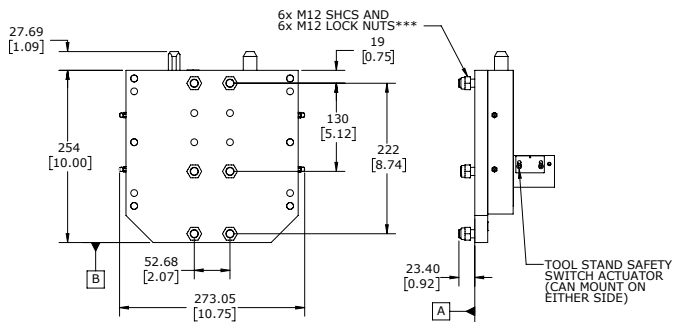


L-Plate Mount

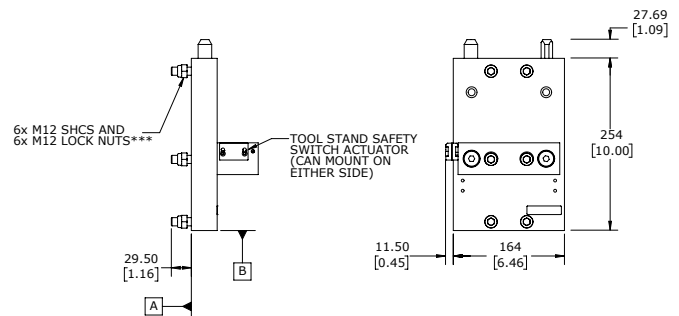


PRODUCT INFORMATION - FIXTURES

Compliant Fixture



Non-Compliant Fixture



* Dimensions are in millimeters (inches).

** All dimensions are descriptive and subject to variation for technical upgrading. We reserve the right to make variations without prior notification.

*** Mounting M12 SHCS locations for Non-Compliant Fixture are the same as the Compliant Fixture locations.

