

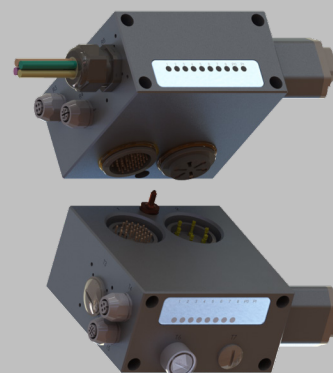
XCHANGE™ Utility Module

Heavy Duty Electrical Modules - Communications

Electrical Modules pass electrical signals during an automatic tool changing operation.

Advantages:

- Flexible Connection Options
- Aluminum construction to reduce electrical noise
- Low-Profile to minimize end effector height
- Replacement probes for fast and easy maintenance
- Additional feedback passthru is optional



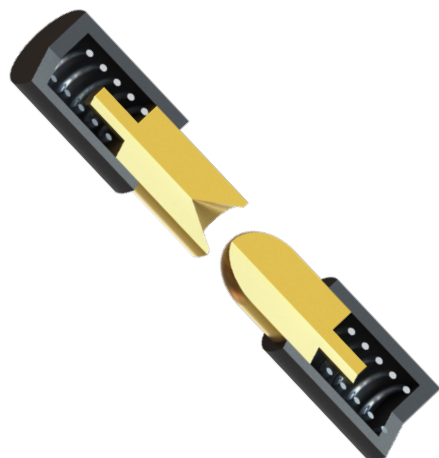
SPECIFICATIONS

Model	Description	User Connection	Rated Current	Rated Voltage	Couple/Uncouple Sensor Interface	Weight**
			A	V (AC/DC)		kg (lb)
E-R-EIP-M12-4.25/4.05-P-015-TSM	Robot Adaptor - Ethernet/IP and/or Profinet	7/8 4 PIN M12 4 PIN D-CODED	10 4	600 48/60	Yes	1.55 (3.41)
E-T-EIP-M12-4.25/4.05-015-TSM	Tool Adaptor - Ethernet/IP and/or Profinet	7/8 4 SOC M12 4 PIN D-CODED	10 4	600 48/60	N/A	1.70 (3.74)
E-R-PN-M12-5.25/4.05-P-015-TSM	Robot Adaptor - Ethernet/IP and/or Profinet	7/8 5 PIN M12 4 PIN D-CODED	4 4	300 48/60	Yes	1.55 (3.41)
E-T-PN-M12-5.25/4.05-015-TSM	Tool Adaptor - Ethernet/IP and/or Profinet	7/8 5 SOC M12 4 PIN D-CODED	4 4	300 48/60	N/A	1.70 (3.74)
E-R-PN-PP-5.25/4.05-P-015-TSM	Robot Adaptor - Profinet - Push/Pull Connections	Push/Pull 5 PIN Push/Pull RJ45 10 PIN	16 1.75	400 48	Yes	1.55 (3.41)
E-T-PN-PP-5.25/4.05-015-TSM	Tool Adaptor - Profinet - Push/Pull Connections	Push/Pull 5 PIN Push/Pull RJ45 10 PIN	16 1.75	400 48	N/A	1.70 (3.74)
E-R-PN-M12-L5.25/4.05-P-015-TSM	Robot Adaptor - Profinet - M12 Connections	M12 5 PIN L-CODED M12 4 PIN D-CODED	16 4	63 48/60	Yes	1.55 (3.41)
E-T-PN-M12-L5.25/4.05-015-TSM	Tool Adaptor - Profinet - M12 Connections	M12 5 SOC L-CODED M12 4 SOC D-CODED	16 4	63 48/60	N/A	1.70 (3.74)
E-R-DN-7/8-8.25/1.05-P-015-TSM	Robot Adaptor - DeviceNet	7/8 4 PIN 7/8 5 PIN	4 4	250 300	Yes	1.55 (3.41)
E-T-DN-7/8-8.25/1.05-015-TSM	Tool Adaptor - DeviceNet	7/8 4 SOC 7/8 5 SOC	4 4	250 300	N/A	1.70 (3.74)

* All modules include Couple/Uncouple Sensor Interface, TSM and Tool ID. All modules have SCM counterpart versions available
 ** Module weight may vary depending on specific configuration.

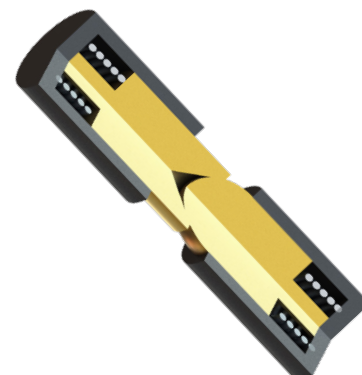
Operating Temperature: **5 - 60 °C (40 - 140 °F)**
 Noise Emissions (Sound Pressure): **≤ 70 dB(A) in any direction**

CONTACT PROBE TECHNOLOGY



Applied Robotics XCHANGE™ electrical modules use spring loaded contact probes for their many benefits:

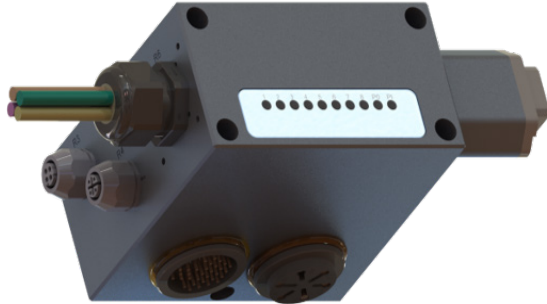
- Low contact resistance
- High mating cycles
- Limited debris buildup
- Minimal maintenance



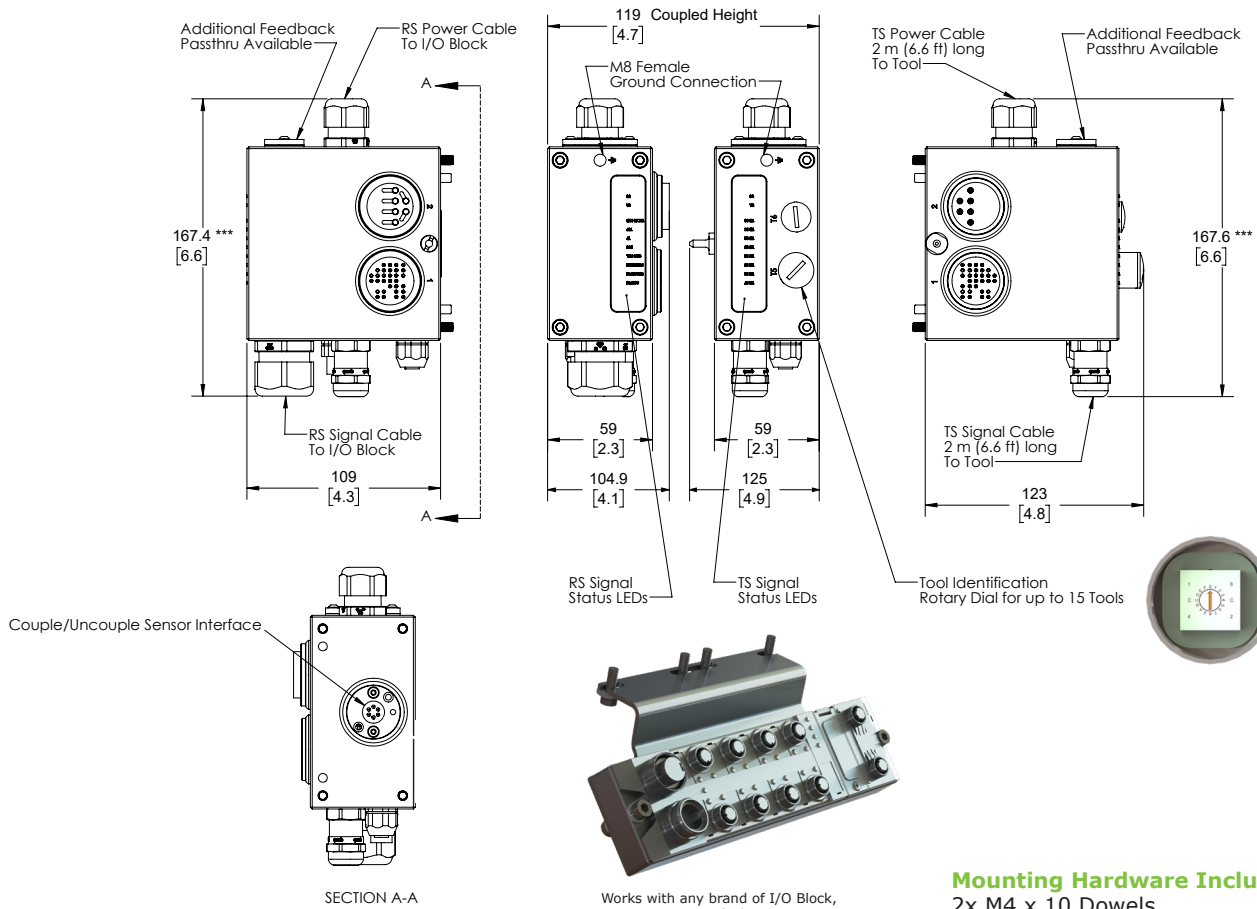
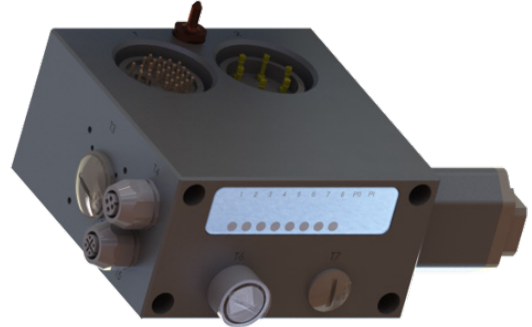
* Images are visual representations only.

PRODUCT INFORMATION

ROBOT ADAPTOR MODULE



TOOL ADAPTOR MODULE



Mounting Hardware Included:

2x M4 x 10 Dowels
4x M4 x 16 SHCS

* Dimensions are in millimeters (inches).

** All dimensions are descriptive and subject to variation for technical upgrading. We reserve the right to make variations without prior notification.

*** Dimensions to the end of the Strain Relief. Cable is not included in measurement.