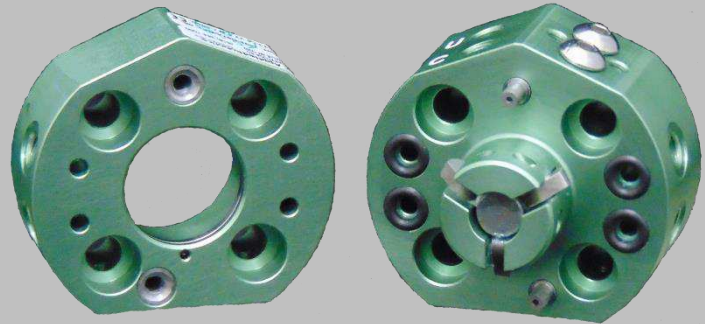


EPSILON TOOL CHANGER

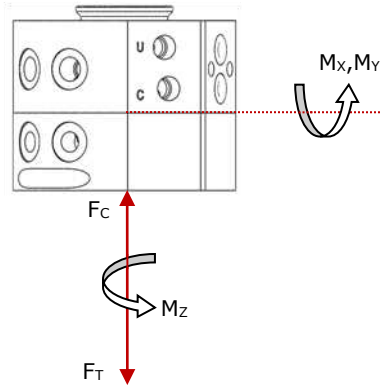
ER31.5/ET31.5

Applied Robotics automatic tool changing technology allows for exchanging robotic end-of-arm tooling (EOAT) on the fly without shutting down production lines. Not only does this add efficiency to processes requiring frequent connection/disconnection of tooling and support utilities, but also reduces the probability of human errors introduced by manual connections.



SPECIFICATIONS

METRIC ENGLISH



Mechanical

Payload	10 Kg	22 lbs
Maximum Operating Moment (M_x, M_y)	52 Nm	465 in-lbs
Maximum E-Stop Moment (M_x, M_y)	79 Nm	700 in-lbs
Maximum Operating Torque (M_z)	30 Nm	265 in-lbs
Maximum E-Stop Torque (M_z)	60 Nm	530 in-lbs
Maximum Tensile Force (F_T)	934 N	210 lbs
Maximum Compressive Force (F_c)	4,159 N	935 lbs
Positional Repeatability (X, Y & Z)	+/- 0.02 mm	+/- 0.0008 in
Operating Temperature	5 - 60 °C	40 - 140 °F

Electrical/Pneumatic

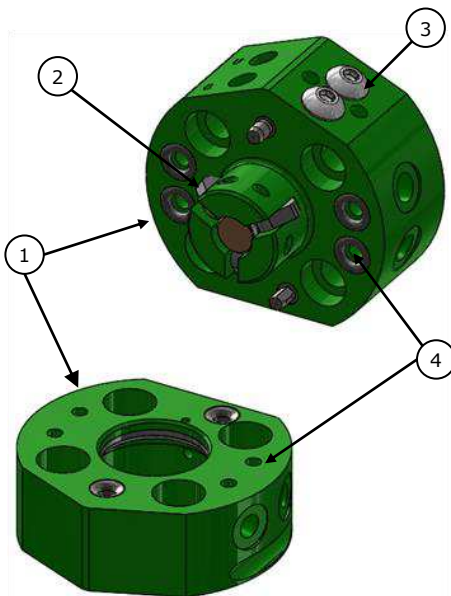
Supply Pressure	5 - 7 bar	72 - 101 psi
Couple/Uncouple Sensing Voltage (Optional)	10 - 30 Vdc	10 - 30 Vdc
User Pneumatic Pressure Range	0 - 7 bar	0 - 101 psi
User Pneumatic Flow (@ 60 psi Supply Pressure)	179 NLPM	6.9 SCFM

Advantages

- 1) High Strength Aluminum Alloy Body
- 2) Cam Locking Mechanism with
 - Lifetime Guarantee**
 - o Self-Centering
 - o Wear Compensating
 - o Self-Cleaning
 - o Positive Cam Retraction
- 3) Optional Couple/Uncouple Sensing
- 4) 4x M5 User Pneumatic Ports

Optional Utilities

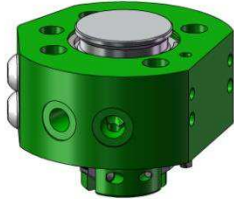
- Electrical Passthru (Signal, Communication, etc.)



PRODUCT INFORMATION

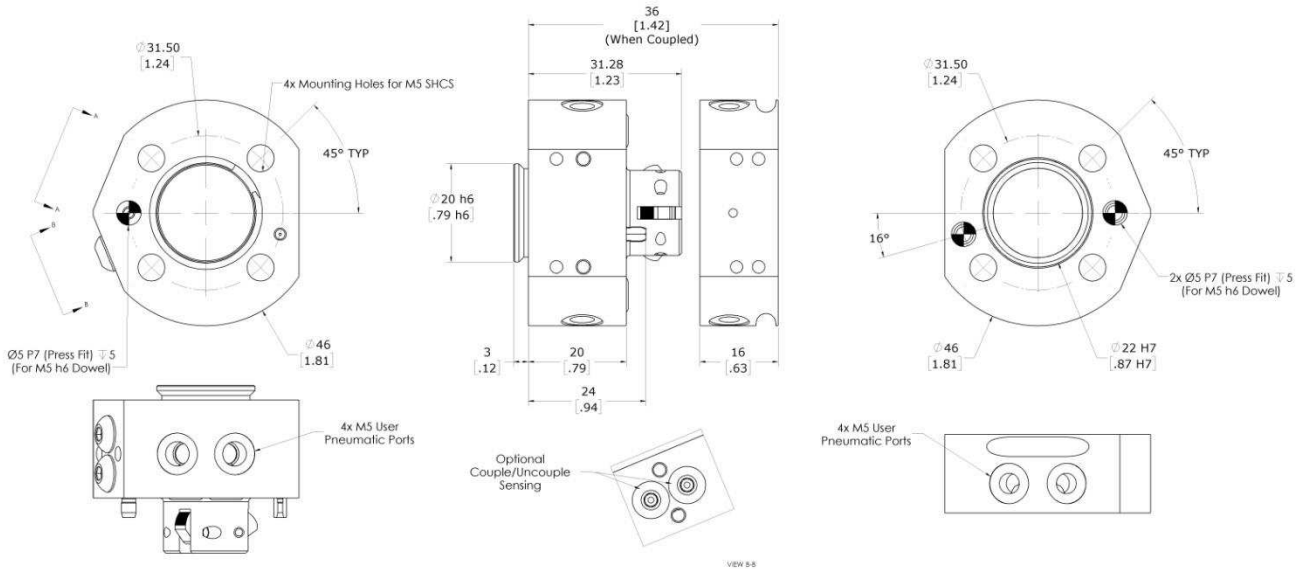
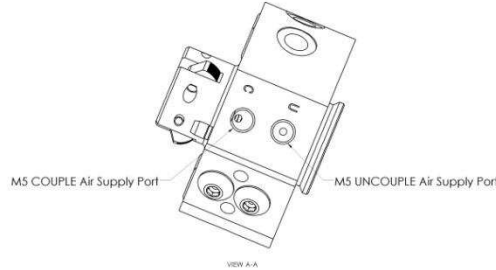
ROBOT ADAPTOR

ROBOT ADAPTOR WEIGHT: 0.09 kg [0.20 lbs]

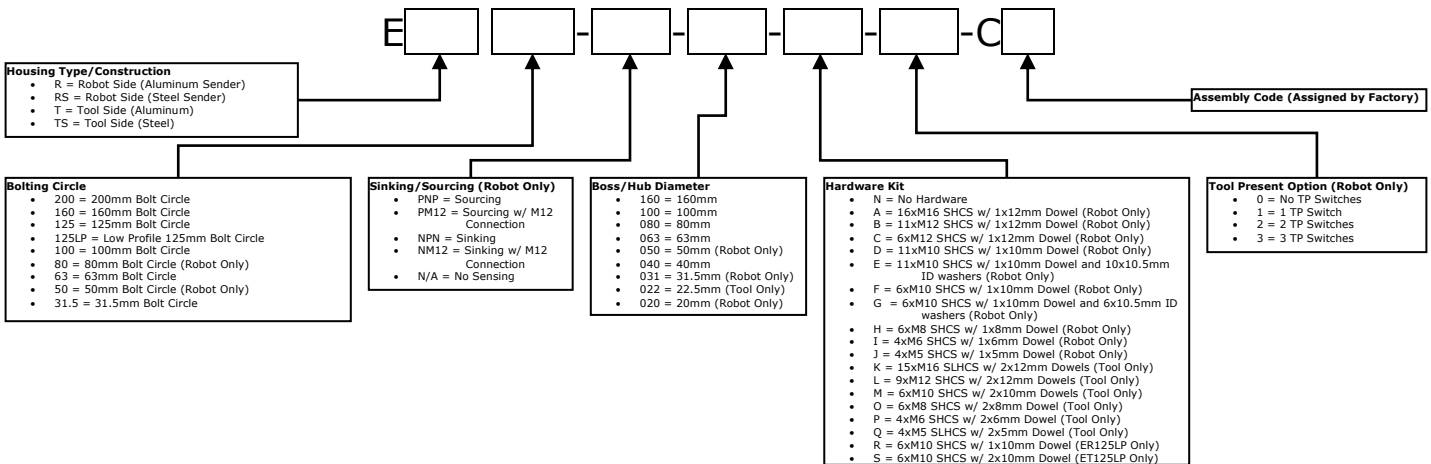


TOOL ADAPTOR

TOOL ADAPTOR WEIGHT: 0.04 kg [0.09 lbs]



PRODUCT DESCRIPTION



Assembly Code (Assigned by Factory)

648 Saratoga Road
 Glenville, NY 12302 USA
 Tel: 518 384 1000
 Fax: 518 384 1200

Via Roma 141/143
 8017 San Maurizio
 d'Opaglio (NO) - Italy
 Tel: +39 (0) 32 29 65 93
 Fax: +39 (0) 32 29 50 686

www.appliedrobotics.com

