

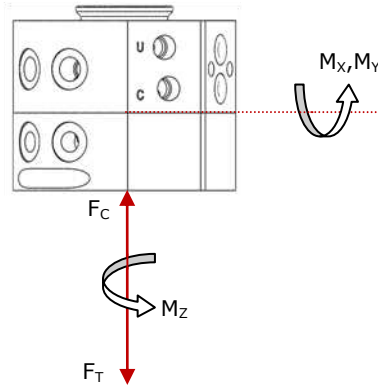
# EPSILON TOOL CHANGER

## ER31.5/ET31.5

Applied Robotics automatic tool changing technology allows for exchanging robotic end-of-arm tooling (EOAT) on the fly without shutting down production lines. Not only does this add efficiency to processes requiring frequent connection/disconnection of tooling and support utilities, but also reduces the probability of human errors introduced by manual connections.



## SPECIFICATIONS



### Mechanical

	METRIC	ENGLISH
Payload	10 Kg	22 lbs
Maximum Operating Moment ( $M_x, M_y$ )	52 Nm	465 in-lbs
Maximum E-Stop Moment ( $M_x, M_y$ )	79 Nm	700 in-lbs
Maximum Operating Torque ( $M_z$ )	30 Nm	265 in-lbs
Maximum E-Stop Torque ( $M_z$ )	60 Nm	530 in-lbs
Maximum Tensile Force ( $F_T$ )	934 N	210 lbs
Maximum Compressive Force ( $F_c$ )	4,159 N	935 lbs
Positional Repeatability (X, Y & Z)	+/- 0.02 mm	+/- 0.0008 in
Operating Temperature	5 - 60 °C	40 - 140 °F

### Electrical/Pneumatic

Supply Pressure	5 - 7 bar	72 - 101 psi
Couple/Uncouple Sensing Voltage (Optional)	10 - 30 Vdc	10 - 30 Vdc
User Pneumatic Pressure Range	0 - 7 bar	0 - 101 psi
User Pneumatic Flow (CFM)		

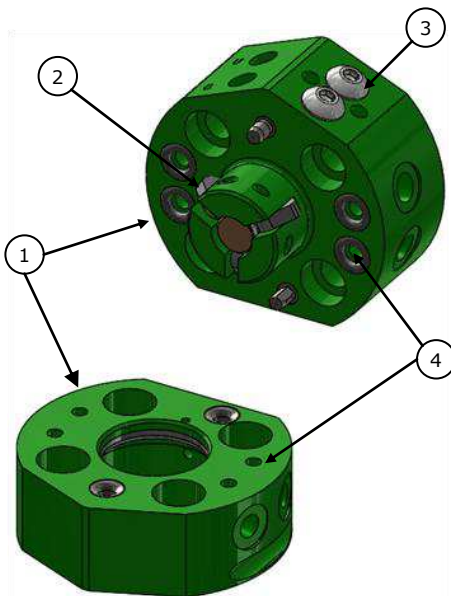
\*\*Contact Applications Engineering\*\*

### Features & Benefits

- 1) High Strength Aluminum Alloy Body
- 2) Cam Locking Mechanism with **Lifetime Guarantee**
  - o Self-Centering
  - o Wear Compensating
  - o Self-Cleaning
  - o Positive Cam Retraction
- 3) Optional Couple/Uncouple Sensing
- 4) Optional Tool Present Sensing
- 5) 8x G1/8 User Pneumatic Ports

### Optional Utilities

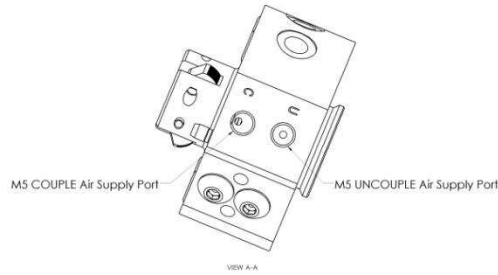
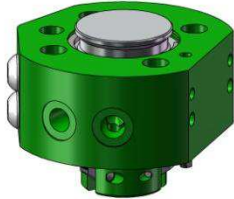
- Electrical Passthru (Signal, Communication, etc.)



# PRODUCT INFORMATION

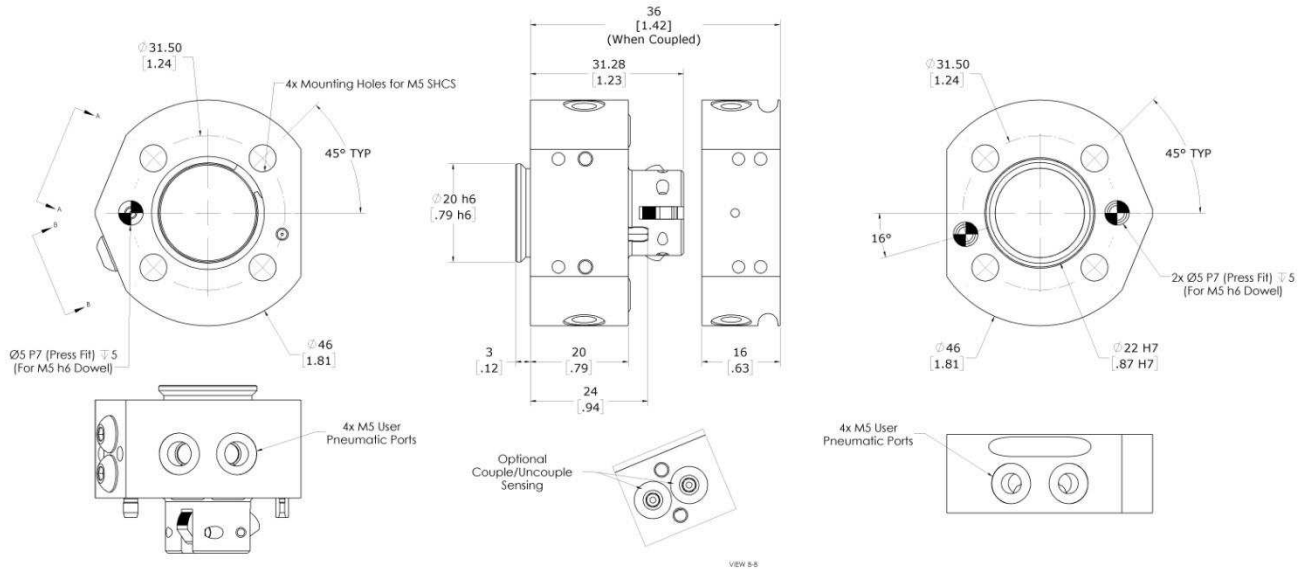
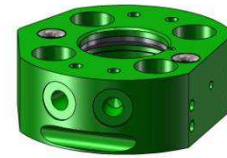
## ROBOT ADAPTOR

ROBOT ADAPTOR WEIGHT: 0.09 kg [0.20 lbs]

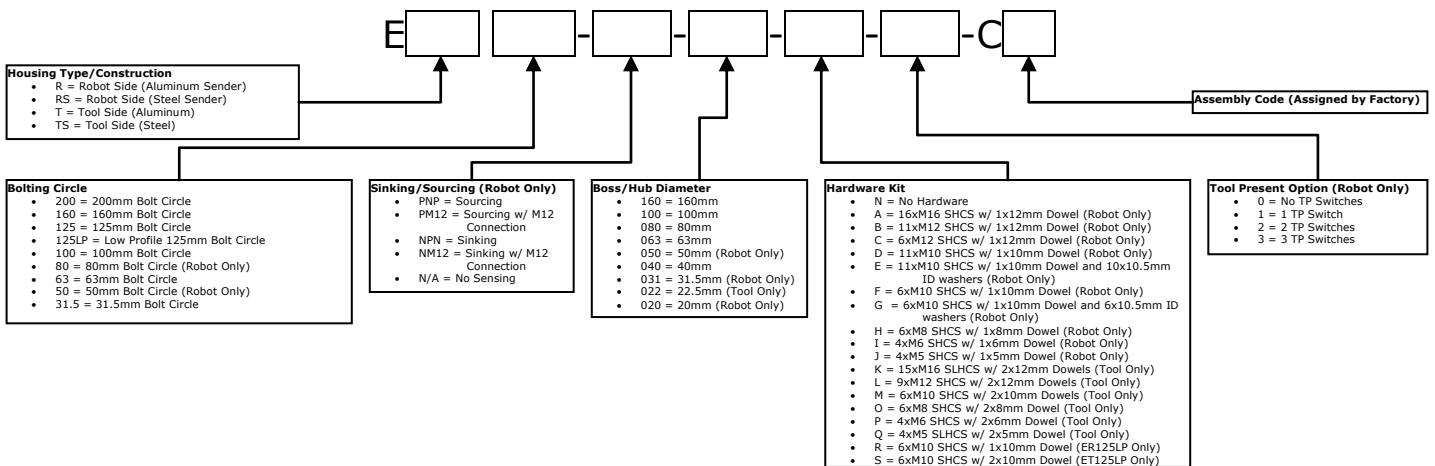


## TOOL ADAPTOR

TOOL ADAPTOR WEIGHT: 0.04 kg [0.09 lbs]



# PRODUCT DESCRIPTION



648 Saratoga Road  
 Glenville, NY 12302 USA  
 Tel: 518 384 1000  
 Fax: 518 384 1200

Via Roma 141/143  
 8017 San Maurizio  
 d'Opaglio (NO) - Italy  
 Tel: +39 (0) 32 29 65 93  
 Fax: +39 (0) 32 29 50 686

[www.arobotics.com](http://www.arobotics.com)