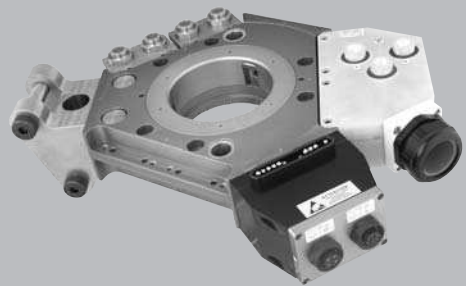


Sigma Modules

With onboard optional pneumatic, electrical, and coolant modules mounted directly to the Sigma 3.1 or Sigma 5.1, the Sigma Modules offer the flexibility to disconnect any utility requirement.



Features and Benefits

- All modules are interchangeable between the Sigma 3.1 and 5.1, reducing spare parts investment and installation time.

Not exactly what your application requires? Applied Robotics can design a solution that meets your particular application needs.

Note: Specifications provided are maximum recommended limits under static conditions. For correct product sizing, consideration must be given to all dynamic forces, including manipulator inertia, tooling configuration and external process forces.

Note: For correct product sizing, please contact our Tech Support staff at techsupport@arobotics.com or at (800)309-3475 or (518)384-1000.

Applications

- Spot welding (Pneumatic/Servo)
- Material handling
- Machine loading/unloading
- Mold changing
- Docking systems
- Pallet coupling systems
- Pick and place operations
- Press transfer

Engineering Data

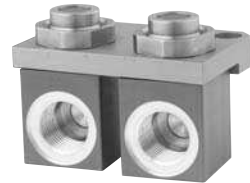
VALVE MODULE



Description	Weight	Cv	Max Response time	Operating Pressure	Power Voltage (VDC)	Consumption (WDC)
External Valve Module Two Position, Double Solenoid, Latching	0.57 kg/ 1.26 lb	0.9	24 ms	6 bar +/- 1 87 psi +/- 15	24	1

Overall dimensions: 126.0mm x 57.0mm x 43.0mm (4.96" x 2.24" x 1.69")
Control cable included

continued

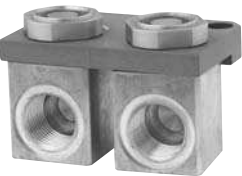


PNEUMATIC MODULE

Description	Weight	Fitting size	Cv
Pneumatic Module	0.36 / .8 lb	3/4 NPT / BSPP	1.54
Pneumatic Module	0.36 / .8 lb	3/4 NPT / BSPP	1.54

Overall dimensions: 76.0mm x 51.75mm x 50.0mm (2.99" x 2.04" x 1.97")
 Special version includes fittings and hose to supply valve

COOLANT MODULE



Description	Weight	Fitting size	Cv
Brass External Coolant Module	0.36 / .8 lb	3/4 NPT / BSPP	1.54
Brass External Coolant Module	0.36 / .8 lb	3/4 NPT / BSPP	1.54

Overall dimensions: 76.0mm x 51.75mm x 50.0mm (2.99" x 2.04" x 1.97")
 Special version includes fittings and hose to supply valve

HKVA MODULE



Description	Number of Contacts	Weight	Amperage Rating	Voltage Rating
Robot	3	1.4 kg / 3.08 lb	200	600
Tooling	3	1.5 kg / 3.3 lb	continuous	