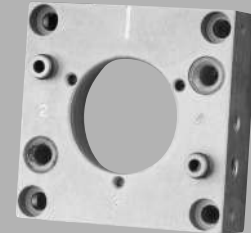
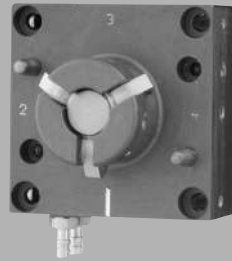


# MXC5 Modules Quick Connect

QuickConnect modular connection systems are designed for automated equipment that requires frequent connection and disconnection of utilities.



## Features and Benefits

- The family of QuickConnect System is the most flexible connection system on the market.
- 4 open module locations are provided for custom configuration of the MXC5 for your application.

Not exactly what your application requires? Applied Robotics can design a solution that meets your particular application needs.

## Applications

- Test Benches
- Robotic Tool Changing
- Power clamps and work holding fixtures
- Rotary Turntables
- Docking Systems

**Note:** Specifications provided are maximum recommended limits under static conditions. For correct product sizing, consideration must be given to all dynamic forces, including manipulator inertia, tooling configuration and external process forces.

**Note:** For correct product sizing, please contact our Tech Support staff at [techsupport@arobotics.com](mailto:techsupport@arobotics.com) or at (800)309-3475 or (518)384-1000.

## Engineering Data



### ELECTRIC MODULE

Description	Weight	Pass through Utilities	Connector	Material
<b>Master Adaptor</b>	0.03 kg/ 0.07 lb	16 contacts @ 2 Amp, 0-240 VAC/VDC	Solder Cups	Delrin w/Silver plated contacts
<b>Tool Adaptor</b>	0.03 kg/ 0.07 lb	16 contacts @ 2 Amp, 0-240 VAC/VDC	Solder Cups	Delrin w/Silver plated contacts

continued

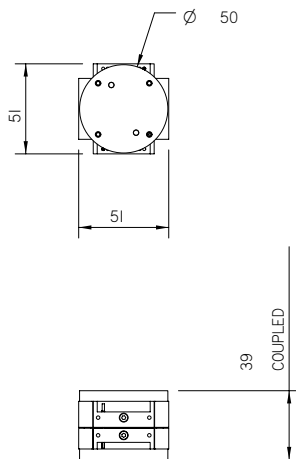
# Engineering Data



## Pneumatic Module

Description	Weight	Pass through Utilities	Pressure	Cv	Material
Master Adaptor	0.01 kg/ 0.02 lb	(4) M3 Ports	0.8.5 bar	0.10	Aluminum
Tool Adaptor	0.01 kg/ 0.02 lb	(4) M3 Ports	0.8.5 bar	0.10	Aluminum/ Stainless Steel

Master adaptor Overall dimensions: 34.5 x 8 x 14.75 mm  
 Tool adaptor Overall dimensions: 34.5 x 8 x 11.75 mm



All dimensions in millimeters

